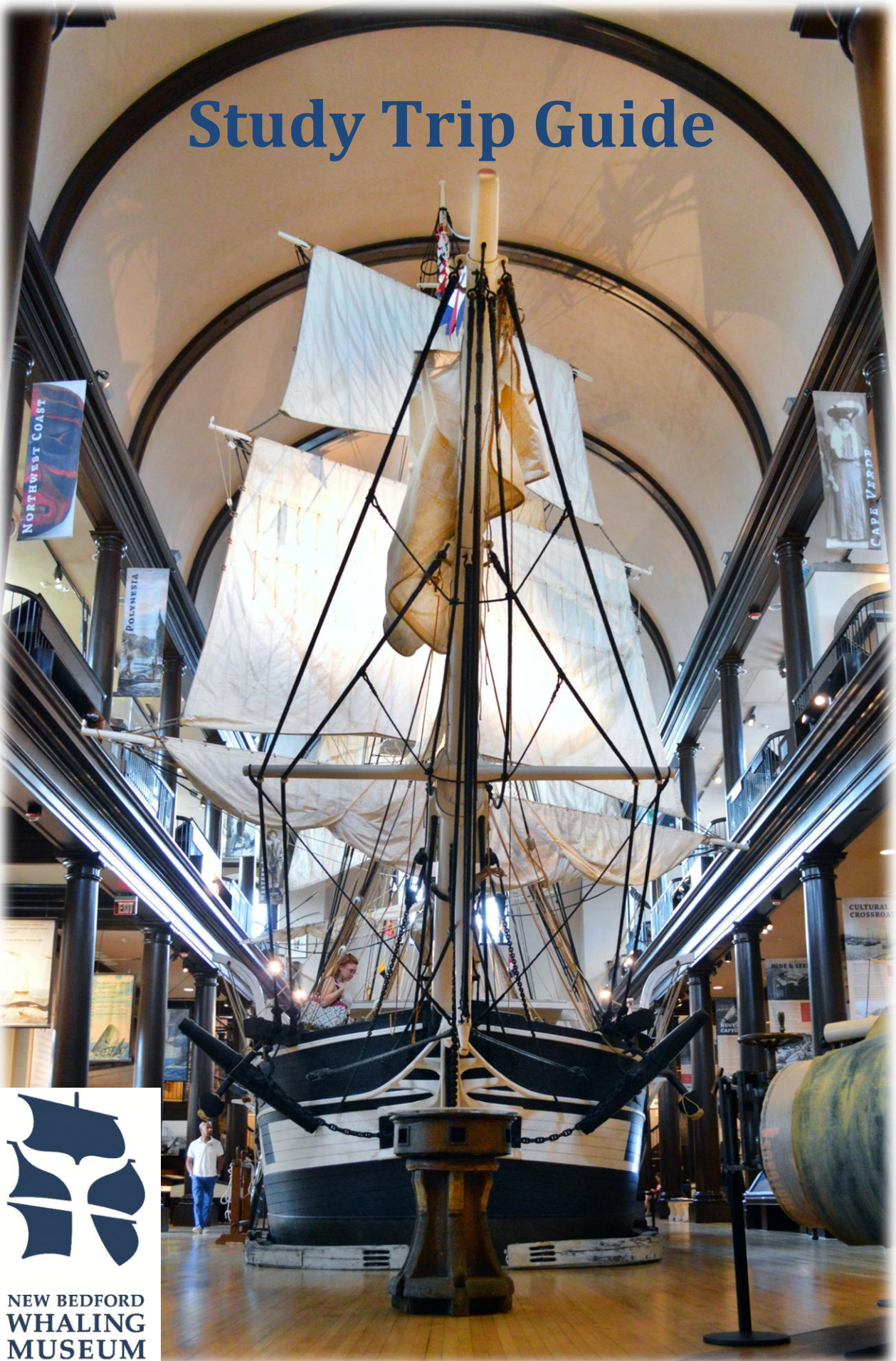


Study Trip Guide



NEW BEDFORD
WHALING
MUSEUM



New Bedford Whaling Museum Study Trip Guide

Contents

1. Welcome

2. Teacher Guidelines

- a. Arriving
- b. Dividing Into Groups
- c. Lunches
- d. Museum Store
- e. Bags and Backpacks

3. Chaperone Guidelines

- a. Responsibilities and Expectations
- b. Museum Store Guidelines

4. Student Guidelines

- a. Backpacks
- b. Food, Drinks, Gum
- c. Cameras
- d. Docents
- e. Running
- f. Handling Objects

5. Directions and Bus Parking

6. Museum Map



**NEW BEDFORD
WHALING
MUSEUM**

Welcome

Hello!

Thank you for booking a study trip to the New Bedford Whaling Museum. We are happy to welcome you and your students to the Museum. In our 20+ galleries you will find local history, whaling history, fine art, ethnographic artifacts, skeletons, other whale body parts, and the world's largest ship model, all ready to be used to create a unique learning experience for your group.

Our trained crew of docents, many of whom are former educators, are ready to share their knowledge and enthusiasm with your students. Please review the schedule for your visit to ensure that we have set up the program that best suits your curriculum needs.

Please visit our website <http://www.whalingmuseum.org/learn/school-programs> for pre- and post- visit activities.

The following pages provide all of the information that you, your chaperones, students and bus driver(s) will need for your visit.

We look forward to seeing you.

Education Department
(508) 717-6885
education@whalingmuseum.org



NEW BEDFORD
WHALING
MUSEUM

Teacher Guidelines

Directions: Please review directions before arriving at the Museum. If you have questions or concerns about travel time, please contact the Admissions Desk (508) 997-0046.

Arrival Time: Please arrive fifteen before your program is scheduled to begin. This allows students time to disembark the bus, hang coats and use the restroom before the program. One teacher must check in with the Admissions Desk upon arrival to verify the group size and take care of payment.

Late arrivals: If your group is going to be late, please call the Admissions Desk (508) 997-0046. If you are more than 10 minutes late for your scheduled visit, we cannot guarantee that all of your program expectations will be met.

Dividing students into groups: Please contact the Education Department at (508) 997-0046 x185, or education@whalingmuseum.org if you have not discussed how many groups the students will be divided into.

Lunch: Bag lunches may be brought to the Whaling Museum only by prior arrangement with the Education Department. A \$30 fee is charged for eating in Museum facilities. Please box student lunches together in clearly marked containers. Remind students that proper museum conduct is expected during lunch. We will provide trash barrels and a recycling container.



Museum Store: Due to the size of our store, a maximum of seven students is allowed into the store at one time. The students must be chaperoned by an adult. Please help the students with their purchase. Before the students approach the register, be sure they have enough money to pay for their purchases, including 6.25% sales tax. This will avoid decision making at the register, saving time and disappointment.

Bags: Students should not bring backpacks or lunch bags with them into Museum galleries. A coatroom and free lockers are available for all belongings. Similarly, adults should refrain from bringing large bags and backpacks into the galleries unless these bags contain medical supplies for students. The Admissions Desk staff will provide you with a sticker for medical supply bags. Water bottles, food and gum are prohibited from the galleries.



Chaperone Guidelines

Thank you for your willingness to take part in a school program at the New Bedford Whaling Museum! Listed below are some ways that you can help the program run smoothly and ensure that all students have an enjoyable visit.

Know the names of the students assigned to your group. They are your responsibility.

Remain with your group. As they tour the museum, model behavior that is responsible and respectful.

Please refrain from the use of a cell phone while with your group.

To help us protect the artifacts, please refrain from carrying backpacks, large bags, and water bottles in the Museum.

If necessary, assist with a child whose behavior is a distraction to the tour.

Please refrain from conversation with students and other chaperones when the docent is working directly with the students.

At the end of the tour, remind the children to thank their docent, a dedicated museum volunteer.

If the group is having lunch within the museum, please remind them that they are still in a museum and should follow museum rules.

If your visit includes a stop at our store, please review the store guidelines.

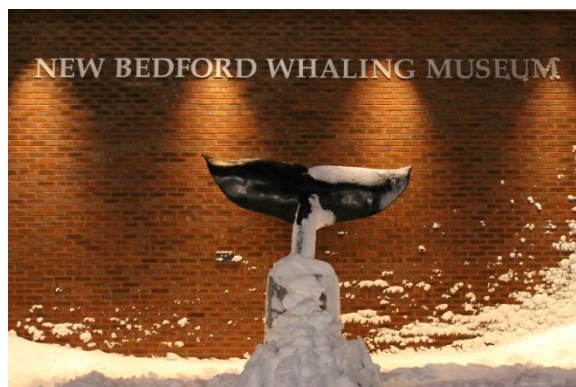
Museum Store Guidelines



Please supervise and assist students with their shopping decisions. Students must be chaperoned at all times in the Museum store.

Before the students approach the register, be sure they have enough money to pay for their purchases, including 6.25% sales tax. This will avoid decision-making at the register, saving time and disappointment.

Limited space in the store allows for only seven (7) students at a time. If the students you are supervising are waiting to enter, please keep them together and away from the store entrance.

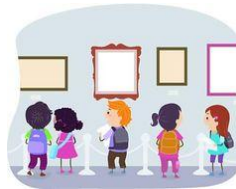


Student Guidelines

Please review the following guidelines with your students so they know what to expect when they visit the Museum.



Backpacks: Backpacks and large bags are not allowed in Museum galleries. The risk of hitting an object with a bag is too great to overlook.



Running: As tempting as it may be to move quickly across the larger spaces within the museum, we do need students to walk.

This will help avoid collisions with artifacts and museum visitors.



Food and Drinks: Please help us protect our one-of-a-kind, irreplaceable objects. Do not bring any food, gum or drinks into the theater or galleries.



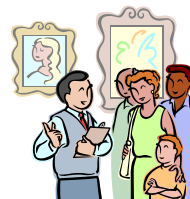
Handling Objects: Our docents will pass around artifacts/teaching resources; we encourage all students

to participate/handle these items. However, because we are a museum, other objects cannot be handled or passed around. Please impress upon your students that they help us to protect those objects by not handling them.



Cameras: You may take photographs in the Museum, but you will need to make sure that your flash is turned off.

Repeated flashes of light damage the paint in museum artwork.



Docents: Students will tour the museum with a docent. Docents are volunteers who lead the museum's educational programs. Tell the

students what a docent is and explain that they need to give their docent the same respect they give their teacher.



For the Bus Driver

Thank you for bringing the students safely to the New Bedford Whaling Museum. While you are here, you are welcome to visit the Museum as our guest.

New Bedford is located one hour south of Boston, MA, and 40 minutes east of Providence, RI.

From I-195, take **Exit 15** (New Bedford Downtown)

Proceed one mile to the first set of lights (**Elm St.**) and turn right.

Take the second left onto **Bethel St.** and proceed one block up the hill to the corner of **Bethel and William Streets**. You will see the NBWM entrance diagonally across from you.

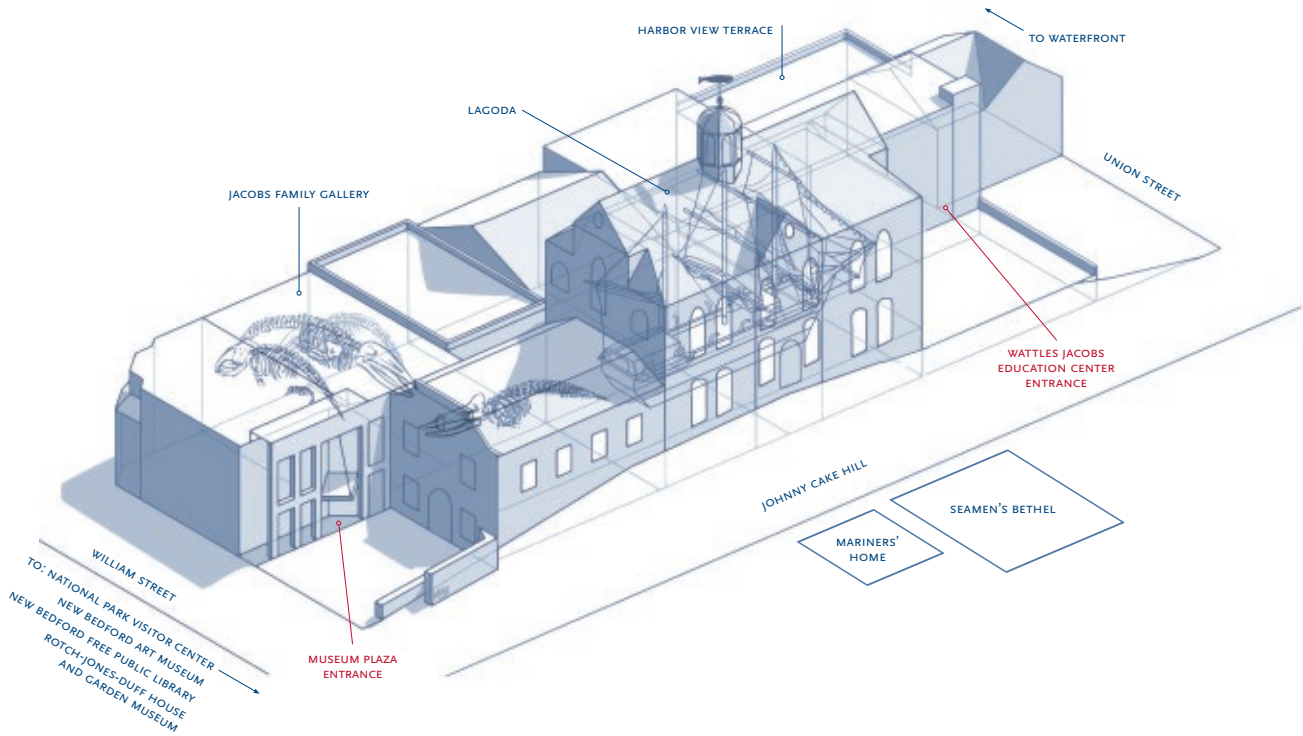
After students have been dropped off **please proceed to the Whale's Tooth Lot**, 532 Acushnet Ave. (follow the red arrows) This parking is free. During peak season, Whale's Tooth staff will direct you to park around the rim of the lot. During shoulder season, there is ample parking. No staff will be present.

When departing at the end of the field trip, turn left onto William St, rather than going straight onto Johnny Cake Hill. JCH is often too narrow for buses. At the bottom of William St, you will turn left onto **N. Water St.**, follow it until the stop sign and then turn right onto **Elm St.** At the bottom of Elm, turn left at the traffic light onto **Rte. 18 North**.

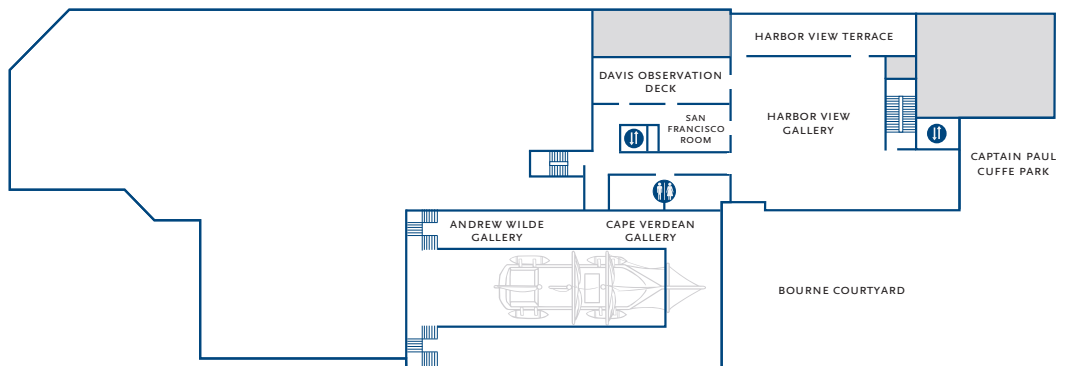
Teachers and chaperones are asked to escort students to the front entrance of the Museum.



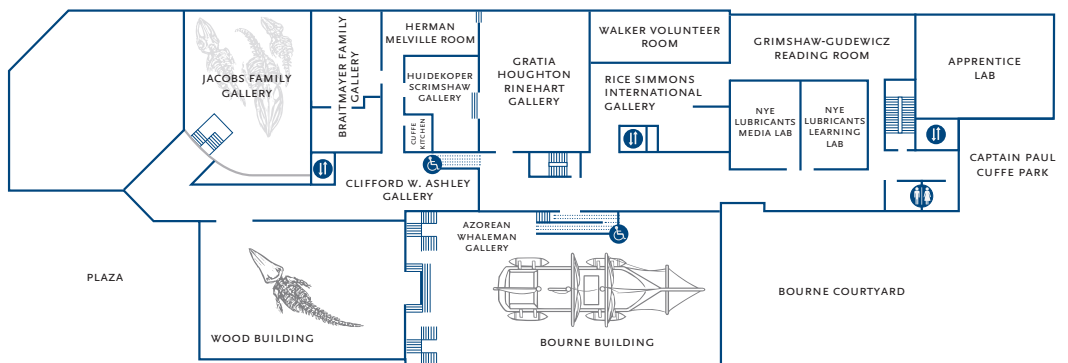
Directory



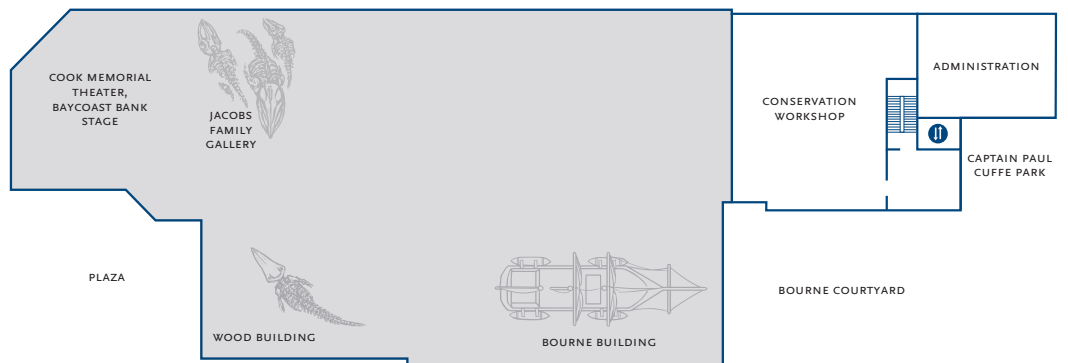
Level
4



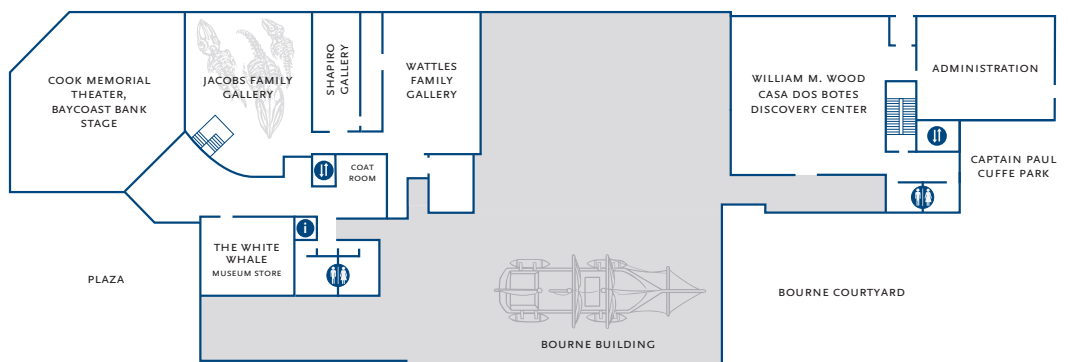
Level
3



Level
2



Level
1



Information



Restrooms



Visitor Services



Elevator



Ramp